



HIGH
QUALITY
INDUSTRIAL
SOLUTIONS

CATALOGUE - 2023

COMPANY INTRODUCTION

Koperscot Trading L.L.C is a leading trader in Steel Products, power tools, Handtools, Welding & cutting, Air compressors & Air treatments, Garage equipment ,Safety & Lifting Equipment and Fasteners in the UAE. Further, the Group's extensive knowledge of UAE's industrial and commercial infrastructure as well as in the Middle East at large makes it an ideal business partner offering comprehensive benefits in a wide range of services. Koperscot. bring together the world's most trusted brands from names such as Makita, Stanley ,Vaultex, Techweld , Balma , Liftek, Toyolift, Shurtape, Dewalt, Yale and house them all under one roof. Get better productivity and efficiency with our broad range of high performance products suited for every type of job.



BRANDS WE DEAL



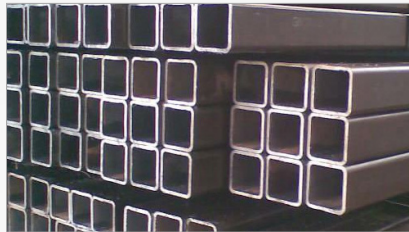


Structural steel is indispensable for numerous applications in the construction industry. In fact, this sector accounts for approximately half of global steel consumption. Structural steel, in particular, offers construction and other industries numerous advantages based on the steel's material compositions and shape options. The combination of these factors can give structural steel various mechanical properties that are well suited to specific applications. As a structural steel service provider in Dubai, KOPERSCOT, can assist you in finding the right structural steel composition and shape to benefit your application.

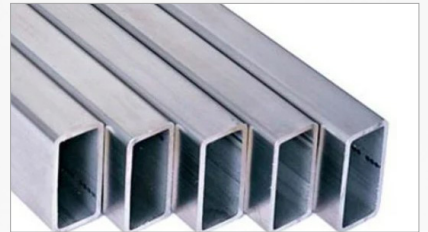
STEEL DIVISION



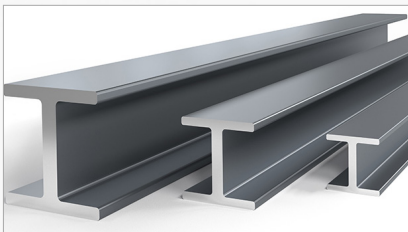
BLACK & HOT DIPPED
GALVANIZED STEEL PIPES



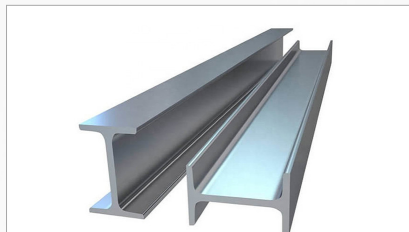
M S SQUARE HOLLOW SECTIONS



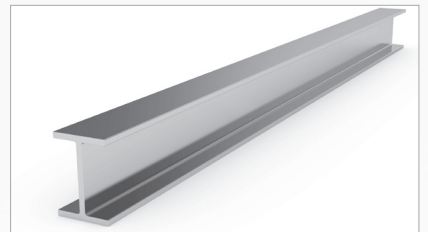
MS RECTANGULAR HOLLOW
SECTIONS



UNIVERSAL BEAMS



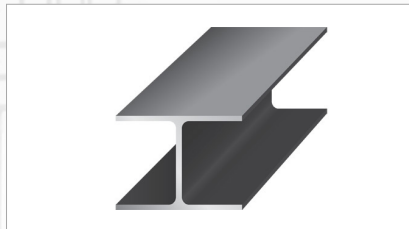
UNIVERSAL COLUMNS



AMERICAN WIDE RANGE
FLANGE BEAMS



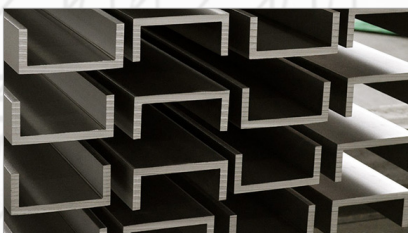
EUROPEAN BEAMS



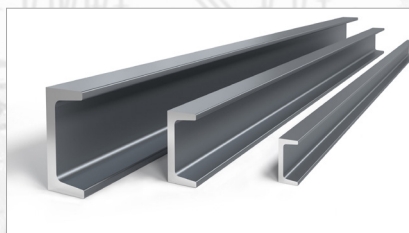
JIS WIDE FLANGES SHAPE



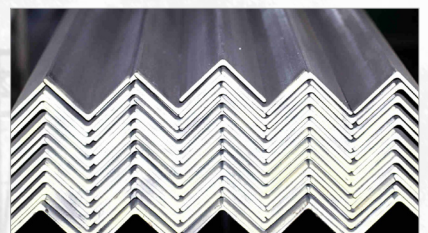
JIS CHANNELS



EUROPIAN STANDARD
CHANNELS (UPN)



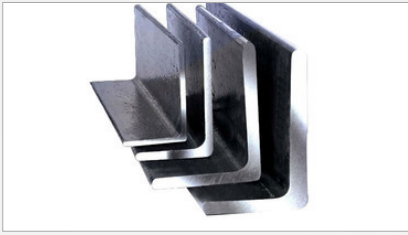
PARELLEL FLANGE CHANNELS



MS EQUAL ANGLES

**STRUCTURAL STEEL- PIPES & TUBES, LONG PRODUCT, FLAT PRODUCT. | ALUMINIUM PRODUCT
STAINLESS STEEL PRODUCT | REINFORCEMENT STEEL REBARS**

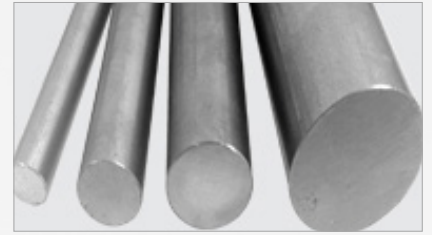




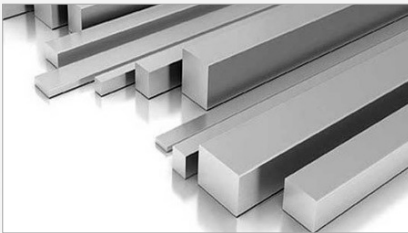
MS UNEQUAL ANGLES



MILD STEEL ROUND BARS



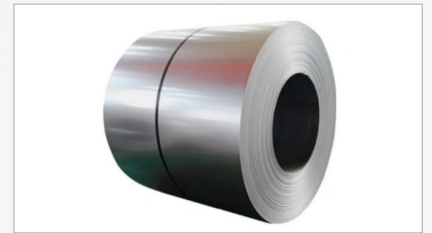
SHAFTING/ BRIGHT BARS



MS SQUARE BARS



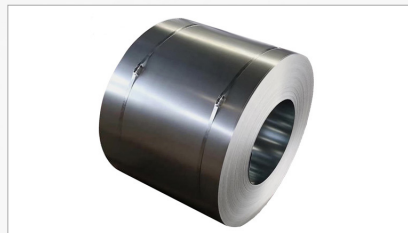
MILD STEEL FLATS



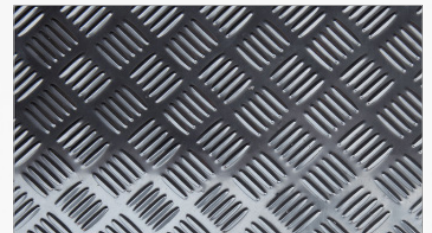
HOT DIPPED GALVANIZED (HDG)
FLAT STEEL (COIL/STRIP/SHEET)



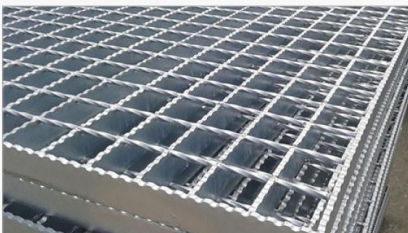
HOT ROLLED STEEL
(COIL/STRIP/SHEET)



COLD ROLLED STEEL
(COIL/STRIP/SHEET)



CHEQUERED PLATES



MS GRATINGS



EXPANDED METAL



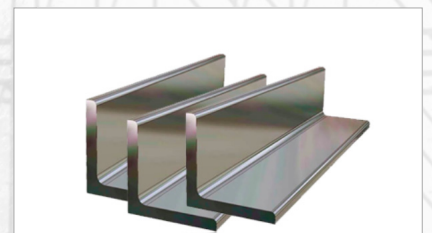
STAINLESS STEEL SHEET



STAINLESS STEEL COIL

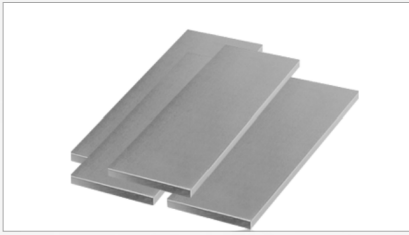


STAINLESS STEEL CHANNEL



STAINLESS STEEL ANGLE

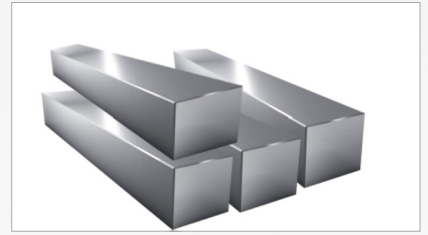
**STRUCTURAL STEEL- PIPES & TUBES, LONG PRODUCT, FLAT PRODUCT. | ALUMINIUM PRODUCT
STAINLESS STEEL PRODUCT | REINFORCEMENT STEEL REBARS**



STAINLESS STEEL FLAT BAR



STAINLESS STEEL ROUND BAR



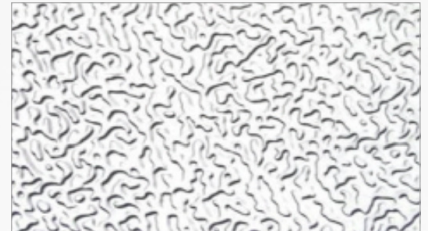
STAINLESS STEEL SQUARE BAR



STAINLESS STEEL TUBE



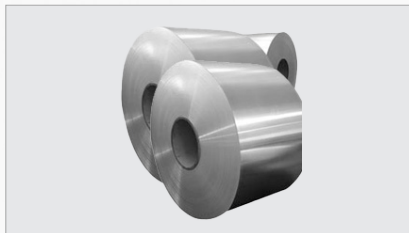
STAINLESS STEEL PIPE



ALUMINIUM SHEET STUCCO
AA1100-H14 (CHINA)



ALUMINUM PLAIN SHEETS



ALUMINUM COILS



HT REBAR BS4449 /
2005 GRADE B500 B



HT REBAR BS4449 GRADE 460 B
/ 500 B (QS)



HT REBAR BS4449/97 GRADE
460 B / 500 B (ES)



BRC MESH



FLANGES



PRE-GALVANISED PIPES



BUTTWELD FITTINGS

**STRUCTURAL STEEL- PIPES & TUBES, LONG PRODUCT, FLAT PRODUCT. | ALUMINIUM PRODUCT
STAINLESS STEEL PRODUCT | REINFORCEMENT STEEL REBARS**





Power tools are any device or machine powered by an external source of energy, such as electricity or compressed air. Unlike hand tools that rely solely on human effort, power tools offer enhanced speed, strength, and efficiency, making them indispensable in various industries.

Power tools provide the strength, precision, and efficiency necessary to complete a wide range of tasks. From workshops to construction sites, power tools enhance productivity and professional results.

POWER TOOLS & ACCESSORIES

CORDED POWER TOOLS



ANGLE GRINDER



AUTO FEED SCREWDRIVER



CUT - OFF



ANGLE DRILL



BAND SAW



CIRCULAR SAW



COMBINATION HAMMER



DEMOLITION HAMMER



DIAMOND CORE DRILL



JIGSAW



MAGNETIC DRILL



SANDER

CORDED POWERTOOLS | CORDLESS POWERTOOLS | ENGINE DRIVEN TOOLS
POWER TOOL ACCESSORIES

CORDED POWER TOOLS



SCREW DRIVER



TAPPER



VACCUM CLEANER

CORDLESS POWER TOOLS



HAMMER DRILL



IMPACT DRIVER



IMPACT WRENCH



PERCUSSION DRIVER DRILL



POWER SCRAPER



RANDOM ORBIT POLISHER



RECIPROCRATING SAW



RIVET GUN



ROTARY HAMMER



DRYWALL CUTTER



HOLE PUNCHER



MULTI TOOL

CORDED POWERTOOLS | CORDLESS POWERTOOLS | ENGINE DRIVEN TOOLS
POWER TOOL ACCESSORIES



Al Sabha Commercial Building - F 69, Jebel Ali Ind Area - 1, P.O.Box : 57770. Dubai - United Arab Emirates

PETROL DRIVEN TOOLS



CHAIN SAW



LAWN MOWER



MIXER



GRASS TRIMMER



HEDGE TRIMMER



WHEEL BARROW

POWER TOOLS ACCESSORIES



ABBRASSIVE DISC



CIRCULAR SAW BLADES



DIAMOND CUTTING DISC



DIAMOND GRINDING WHEELS



JIGSAW BLADE



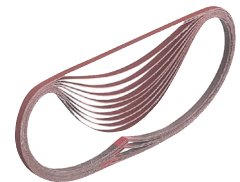
RECIPROSAW BLADE



ROUTER BIT SETS



ROUTER BLADES



SANDING BELTS

CORDED POWERTOOLS | CORDLESS POWERTOOLS | ENGINE DRIVEN TOOLS
POWER TOOL ACCESSORIES



Hand tool, any of the implement used by crafts persons in manual operations. Hand tools are simple tools which you use with your hands , and which are usually not powered also Hand tools is any tool that is powered by hand rather than a motor examples are chopping, chiseling, , cutters, files, striking tools, struck or hammered tools, screwdrivers, vises, clamps, snips, saws, and drills

HAND TOOLS



HAND SOCKET SETS



SCREW DRIVERS



BOX & TORPEDO LEVELS



CHALK REELS



CLAW HAMMERS



GLASS CUTTERS



HACKSAW FRAMES



HAND PLANERS



ADJUSTABLE WRENCH



KNIVES & BLADES



MANUAL HAND DRILLS



MEASURING TAPES & WHEELS

MECHANICAL TOOLS & STORAGE | TAPES , SQUARES & LEVELS | LASERS & ELECTRONICS BLADES & KNIVES SAWS
METALS PLANES & IRONS | STAPLING , GLUINGS & REVETINGS





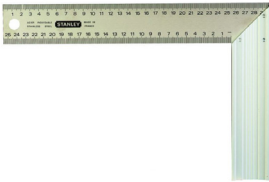
PORTABLE TOOL BOXES



REVETERS



RUBBER Mallet HAMMERS



RULLERS & SQUARES



STAPLERS & TACKERS



WINDOW SCRAPERS



WRENCH SETS



BALL PEIN HAMMER



JET CUT HEAVY DUTY SAW



SURFORM PLANE



FLAT SURFORM BLADES



BEVEL EDGE CHISELS



RIPPING BARS



AVIATION SNIPS



PLIERS

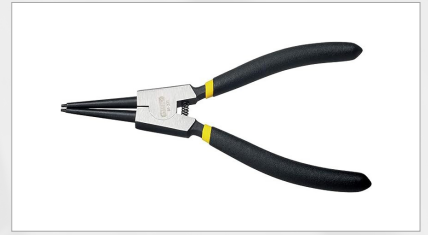
MECHANICAL TOOLS & STORAGE | TAPES , SQUARES & LEVELS | LASERS & ELECTRONICS BLADES & KNIVES SAWS
METALS PLANES & IRONS | STAPLING , GLUINGS & REVETINGS



WATERPUMP PLIER



END NIPPING PLIER



CIRCLIP PLIER



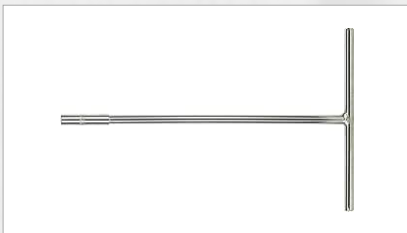
LOCK GRIP PLIER



BOLT CUTTERS



CRIMPING PLIER



T-HANDLES



STD & LONG CHROME SOCKETS



METAL TOOL BOXES



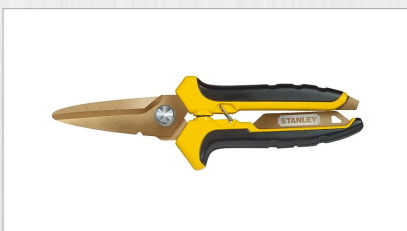
STD & LONG IMPACT SOCKETS



OFF RING WRENCH



COMBINATION WRENCH



SHEARS



VICES



C-CLAMP LOCKING PLIER



Welding is a fabrication process whereby two or more parts are fused together by means of heat, pressure or both forming a join as the parts cool. Welding is usually used on metals and thermoplastics but can also be used on wood. The completed welded joint may be referred to as a weldment. Some materials require the use of specific processes and techniques. A number are considered 'unweldable,' a term not usually found in dictionaries but useful and descriptive in

WELDING & CUTTING

WELDING MACHINES & CONSUMABLES



TECHARC 200- STICK INVERTER WELDER



TECHRAC 400- STICK INVERTER WELDER



TECHM400- MIG WELDER



TECHM500- MIG WELDER



TIGWEL K300HD- TIG WELDER



EVERLASTING GOUGING 1250-SAW/MMA/GOUGING



PLATE CUTTING MACHINE



TITAN MIG 238 IXP

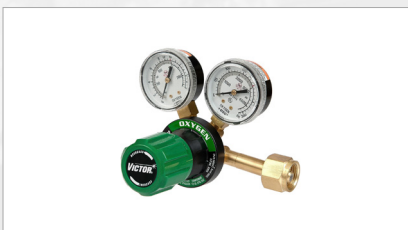


EXPAT - 2000I DCP

WELDING ACCESSORIES & CONSUMABLES



ARGON REGULATOR WITH FLOW METER



HEAVY DUTY GAS REGULATOR- OXYGEN



GOUGING TORCH

STICK , TIG & MIG WELDING MACHINES | OXY FUEL CUTTING ACCESSORIES
WELDING CONSUMABLES





STICK WELDING ACCESSORIES



MIG WELDING TORCH



MIG CONSUMABLES



TIG TORCH



TIG CONSUMABLES



CUTTING ATTACHMENT



TORCH HANDLE



STICK ELECTROD - E6013 , E7018



TIG FILLER WIRE ER4043, ER5356



70S-6 SOLID MIG WIRE



ER4043 ALUMINUM MIG WIRE



E71 FLUX CORED WIRE



TUNGSTEN ELECTRODE



EARTH CLAMP



ELECTRODE HOLDER

STICK , TIG & MIG WELDING MACHINES | OXY FUEL CUTTING ACCESSORIES
WELDING CONSUMABLES





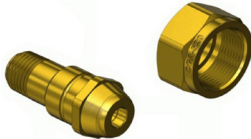
SINGLE INSULATED WELDING
CABLE-BLACK



CABLE JOINTS



SPIGOT NUT & NIPPLE



NUT & NIPPLE



GAS DIFFUSER



CUTTING TIPS



TIP CLEANERS



CYLINDER KEY



CHIPPING HAMMER



CUP TYPE SPARK LIGHTER



TWIN LINE HOSE OXY ACE



GAS WELDING KIT



WELDING LEATHER APRON



AUTO DARKENING WELDING
HELMET



WELDING OVEN

STICK , TIG & MIG WELDING MACHINES | OXY FUEL CUTTING ACCESSORIES
WELDING CONSUMABLES



An air compressor is a machine that takes ambient air from the surroundings and discharges it at a higher pressure. It is an application of a gas compressor, and a pneumatic device that converts mechanical power (from an electric motor, diesel or gasoline engine, etc.) into potential energy stored in compressed air, which has many uses. A common application is to compress air into a storage tank, for immediate or later use. When the delivery pressure reaches its set upper limit, the compressor is shut off, or the excess air is released through an overpressure valve. The compressed air is stored in the tank until it is needed. The pressure energy provided by the compressed air can be used for a variety of applications such as pneumatic tools as it is released. When tank pressure reaches its lower limit, the air compressor turns on again and re-pressurizes the tank. A compressor is different from a pump because it works on a gas, while pumps work on a liquid.

AIR COMPRESSORS & SPARE PARTS



PISTON AIR COMPRESSOR -
SINGLE HEAD (2HP TO 7.5HP)
100 LTR TO 500LTR- SHAMAL -
ITALY



PISTON AIR COMPRESSOR -
DUAL HEAD (5.5HP , 7.5 HP ,
10HP) 500 LTR, 900 LTR- BALMA
-ITALY



OIL INJECTED SCREW
COMPRESSOR , AIR
REFRIGERANT DRYERS & LINE
FILTERS



TMDD ROTARY SCREW
COMPRESSOR 10 HP - 50 HP
(500 LTR , 900 LTR)



VERTICAL AIR RECEIVER TANK
1000 LTRS, 2000 LTRS



COMPRESSOR
PUMPS - 3HP TO 10 HP



ELECTRIC MOTOR - SPRING TYPE



ELECTRIC MOTOR -B3 TYPE
V230/400 - 50HZ



NON-RETURN VALVES



SAFETY VALVES



PRESSURE GUAGES



PRESSURE SWITCHES WITH
MAGNETIC OVERLOAD CUTOUT

PISTON AIR COMPRESSORS | ROTARY AIR SCREW COMPRESSORS
AIR COMPRESSOR SPARE PARTS





AIR INTAKE FILTERS



CONDENSATE REMOVAL & TREATMENT



WHEELS & WHEEL KITS FOR TANKS



FLEXIBLE HOSES



BELT GUARDS



DAMPING ELEMENTS



OIL FOR PISTON COMPRESSORS



SOLENOID VALVES



ELECTRIC CONTROL PANELS



LINE VALVES



PRESSURE REDUCERS



MOTOR PULLEYS



OIL WATER SEPERATOR



AFTER COOLERS



PISTON CONNECTING ROD

PISTON AIR COMPRESSORS | ROTARY AIR SCREW COMPRESSORS
AIR COMPRESSOR SPARE PARTS



Depending on the nature of the job, it is important to identify the kind of PPE that will be required. There are several types of personal protective equipment that must be worn in the workplace, including: Equipment for Protecting the face and eyes, Equipment to protect the ears, Head Protection, Equipment for respiratory Protection, Foot Protection, Body Protection and Hand Protection .

SAFETY



SAFETY FOOTWEAR



WELDING BOOTS & GUMBOOTS



DISPOSABLE SHOE COVER



SAFETY SPECTACLES



SAFETY MASK & RESPIRATORS



SAFETY HARNESS & ARRESTORS



SAFETY BLANKETS



SAFETY HELMETS



FACE SHEILD



SAFETY HAND GLOVES



SAFETY COVERALLS



SAFETY VESTS



LIFE JACKET



WELDING LEG GUARD



EAR MUFFS & PLUGS

FACE & EYES PROTECTION | EAR PROTECTION | HEAD PROTECTION | FOOT PROTECTION
RESPIRATORY PROTECTION | BODY PROTECTION | HAND PROTECTION





PVC TRAFFIC CONES



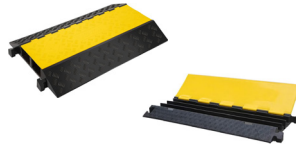
WARNING POSTS



EXPANDABLE BARRIERS



PLASTIC PVC CHAINS



2CHANNEL & 3CHANNEL CABLE
PROTECTORS



TRAFFIC LIGHTS



WARNING TRIANGLES



ROTATING BECON WARNING
LIGHTS



BATON LIGHT



WARNING TAPES



REFLECTIVE TAPES



OIL SPILL KIT IN WHEELED BIN



CARGO LASHING BELT



SAFETY BARRIER MESH

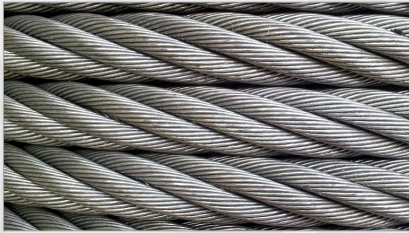


HAND PALLET HYDRAULIC
TRUCK

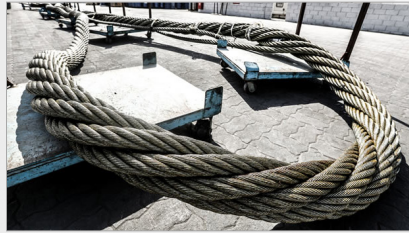
**FACE & EYES PROTECTION | EAR PROTECTION | HEAD PROTECTION | FOOT PROTECTION
RESPIRATORY PROTECTION | BODY PROTECTION | HAND PROTECTION**

There are many devices, tools and equipment that can be used to lift or lower goods or people. The concept is mostly the same. But the way they work or have to be operated differs. Each solution has its own requirements, making it important that operators are trained for each solution individually.

LIFTING



STEEL WIRE ROPE



LIFT CABLE LAID GROMMETS & SLINGS



LIFT HYPERLOCK SLINGS



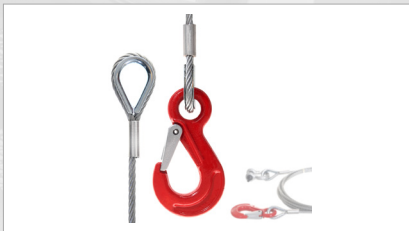
LIFT 9 PARTS BRAIDED SLINGS



STEEL WIRE ROPE SLINGS
STANDARD EYE



THIMBLE EYE



THIMBLE EYE SAFETY HOOK
320N



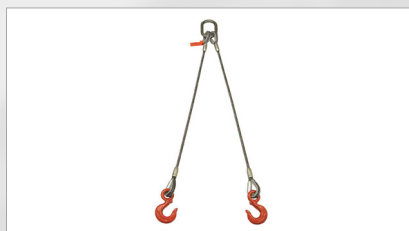
CLOSED SPELTER SOCKET



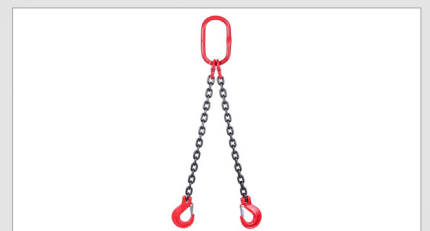
OPEN SPELTER SOCKET



OPEN SWAGED SOCKET



SINGLE LEG , 2 LEG , 3 LEG , 4
LEGS WIRE ROPE SLINGS



CHAIN SLINGS

SHACKLES & THIMBLES | WIRE ROPES & CLIPS
TURN BUCKLES | LOAD BINDERS





CHAIN SLINGS MASTERLINK



MASTERLINK ASSEMBLY



COMPONENT CONNECTOR



CLEVIS TYPE SHORTENING
CLUTCH



CLEVIS HOOK WITH LATCH



EYE HOOK WITH LATCH



SELF LOCKING CLEVIS HOOK



CLEVIS GRAB HOOK



CLEVIS TYPE SELF LOCKING
SWIVEL HOOK



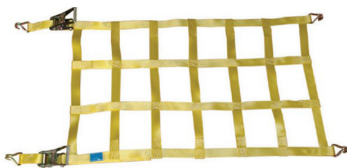
POLYPROPYLENE ROPES



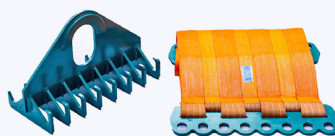
POLYESTER FLAT WEBBING
SLINGS & ENDLESS
ROUND SLINGS



ROUND & FLAT D &
DP WEBBING SLING



LOAD SECURING NET WITH
RATCHET ASSEMBLY



PIPE LOWERING BELT



SUPERMAX ROUND SLING

**SHACKLES & THIMBLES | WIRE ROPES & CLIPS
TURN BUCKLES | LOAD BINDERS**



LIMPET MULTI FUNCTIONAL
HEIGHT SAFETY SYSTEM



WORK POSITIONING BELTS



LANYARDS



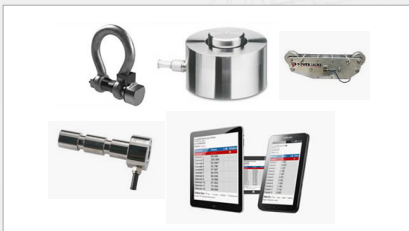
RATCHET CARGO LASHING
ASSEMBLY



GREEN PIN SHACKLES



GRADE 8 & GRADE 10 CHAIN &
FITTINGS



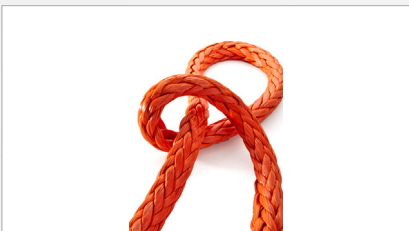
LOAD MONITORING SOLUTIONS



MODULAR SPREADER BEAMS



NYROSTEN WIRE ROPE
LUBRICANTS



DYNEEMA ROPES



SUPERMAX JACKET SLING



COMPRESSIVE LOAD CELLS



DATA LOGGING



LOAD PINS



LOAD SHACKLES

SHACKLES & THIMBLES | WIRE ROPES & CLIPS
TURN BUCKLES | LOAD BINDERS



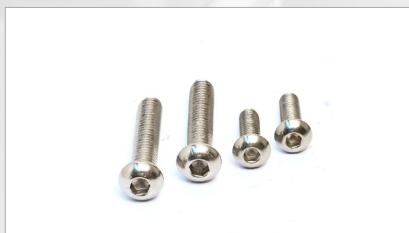


A **fastener** is a hardware device that mechanically joins or affixes two or more objects together. In general, fasteners are used to create non-permanent joints; that is, joints that can be removed or dismantled without damaging the joining components

FASTENERS



ALUMINUM BLIND REVETS



BUTTON HEAD SOCKET CAP SCREW



CAP NUT



CARRIAGE BOLT - DIN 603



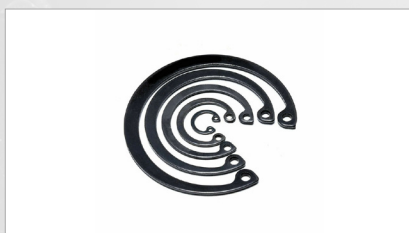
CASTLE NUT



CHIP BOARD SCREW - ZINC PLATED



CIRCLIP EXTERNAL



CIRCLIP INTERNAL



COACH SCREW



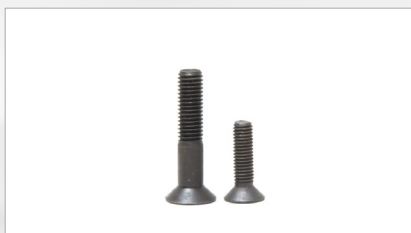
CONCRETE ANCHOR BOLT



COTTER PINS



COUNTER SUNK MACHINE SCREW



COUNTER SUNK SOCKET CAP SCREW



CSK PHILIP HEAD STS



CUP WASHER

**BOLTS & NUTS | SCREWS & FISCHERS | CASTER WHEELS
THREADED RODS & ENGINEERING STUDS**





HEXAGONAL BOLT DIN 933 , DIN 931 ANSI



DISC WASHER



DOWEL PIN



DROP-IN ANCHOR BOLT



DRYWALL GYPSUM SCREW



DRYWALL SCREW



EYE BOLT DIN 444



FISHER WALL PLUG



FIX BOLT WITH EYE BOLT



FIX BOLT WITH HOOK BOLT



FLANGE BOLT



FLANGE HEX NUT



FLAT PLAIN WASHER



FOUNDATION BOLT



FOUNDATION BOLTS

**BOLTS & NUTS | SCREWS & FISCHERS | CASTER WHEELS
THREADED RODS & ENGINEERING STUDS**





G.I. ROOFING NAIL UMBRELLA
HEAD



G.I. THREAD BAR -
2MTR , 3MTR , 4MTR



GYPSUM BOARD PLUG



HANGER BOLT DIN 149



HEX COACHING SCREW



HEX COUPLING NUT



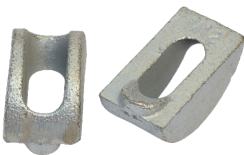
HEX HEAD SDS



HEX NUT



SPRIN WASHER



HILLSIDE - WASHER 01



L- BOLTS G.I.DIN 529



LIFTING EYE BOLT



LOAD - INDICATING WASHER -
F959M 01



LONG NUT



LOW HEAD SOCKET CAP SCREW

**BOLTS & NUTS | SCREWS & FISCHERS | CASTER WHEELS
THREADED RODS & ENGINEERING STUDS**



MACHINE SCREW CHEESE
SLOT HEADED



MACHINE SCREW CSK
SLOTTED HEAD



MACHINE SCREW NICKEL
COATED CSK SLOTTED



MACHINE SCREW OVAL HEAD
SLOTTED



MACHINE SCREW PAN HAED
SLOTTED



MACHINE SCREW PAN
PHILIP HAED



MACHINE SCREW DIN - 7985-01-1



MACHINE SCREW DIN - 7985-06



METAL FRAME ANCHOR



NAIL WASHER



NUT M.S HEX DIN - 934



NUTS G.I HEX DIN -934



NYLONE CUP WASHER



NYLON LOCK NUT - DIN - 985 - 02



OVAL WAFER HEAD SDS POINT

**BOLTS & NUTS | SCREWS & FISCHERS | CASTER WHEELS
THREADED RODS & ENGINEERING STUDS**





OVAL WAFER HEAD STS PIONT



PAN COMBINATION HEAD STS



PAN PHILIP HEAD STS



PAN SLOTTED HAED STS



PVC HEX CAP



PVC SCREW CAP



RAWL BOLTS



ROOFING BOLT



S.D.S BUGGLE PHILIP HEAD



SAFETY WASHER



SCREW ANCHOR



SDS CSK PHILIP HEAD



SDS UNSLOTTED FLANGE HEAD

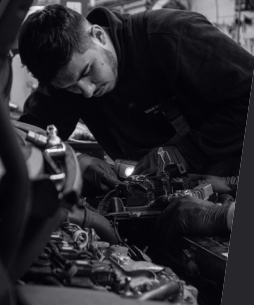


SDS PAN PHILIP HEAD



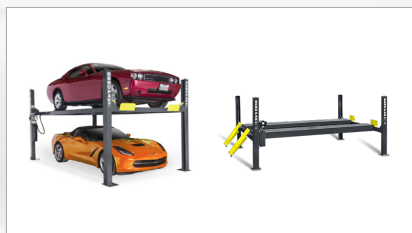
SHEAR STUD

**BOLTS & NUTS | SCREWS & FISCHERS | CASTER WHEELS
THREADED RODS & ENGINEERING STUDS**



Our selection of garage equipment is a one stop shop for professional mechanics, to avid car enthusiasts. We stock items to fully kit out workshops including jacks, creepers and body repair kits, as well as hoists, parts washers and engine cranes. Rest assured you will find the perfect equipment for your garage with our fantastic range.

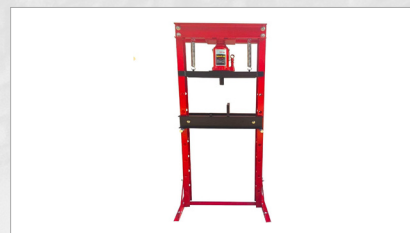
GARAGE EQUIPMENT



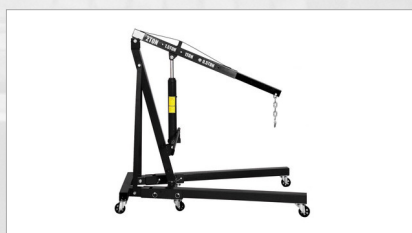
FOUR POST LIFT - BENDPAK USA



TWO POST LIFT - BENDPAK USA



HYDRAULIC SHOP PRESS



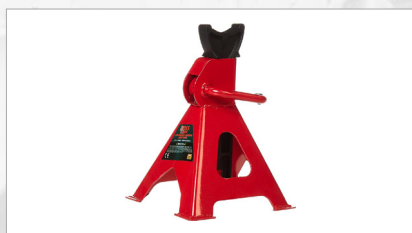
ENGINE CRANE



TRANSMISSION JACK



HYDRAULIC FLOOR JACK



JACK STAND



BOTTLE JACK



PAINT BOOTH



CHAIN BLOCK HOIST



WORK BENCH WITH DRAWER



BENCH GRINDER



BENCH VICE



SEVEN DRAWER TOOL SET



BATTERY CHARGERS

CRANES & JACKS | VISES & GRINDERS | HYDRAULIC LIFTS
SPRAY PAINTING EQUIPMENT





JUMP START BOOSTER PACK



AIR OPERATED OIL SUCTION
DRAINER FOR EXHAUSTER
OIL 65 L



AIR DUSTER GUN



PNEUMATIC SPRAY GUN WITH
UPPER TANK



GREASE PUMP



CUP TYPE OIL FILTER WRENCH
23PCS SET



QUICK COUPLING



3 LEG OIL FILTER WRENCH



CHAIN OIL FILTER WRENCH



STRAP OL FILTER WRENCH



BATTERY FLUID FLASK



CREEPER SEAT



RECOIL AIR HOSE



HAND TROLLEY TRUCK



PALLET TRUCK

**CRANES & JACKS | VISES & GRINDERS | HYDRAULIC LIFTS
SPRAY PAINTING EQUIPMENT**



Koperscot Deals with all kinds of general hardware from Painting accessories to Door lock fittings

GENERAL HARDWARES



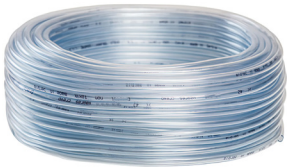
AGRO SPRAY TANK



GARDEN SPRAY GUN SET



GARDEN SPRINKLER IRRIGATING
PLASTIC NOZZEL



CLEAR LEVEL HOSE



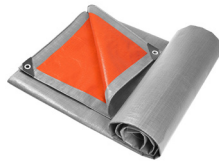
PVC HOSE BLUE COLOUR



PVC HOSE GREEN COLOUR



TARPAULINE BLUE COLOUR



TARPAULINE SILVER-ORANGE
COLOUR



PVC BUCKET YELLOW & BLK



NYLONE ROPE



COTTON ROPE



BINDING WIRE ELEGALVANISED

PAINTING ACCESSORIES | ADHESIVES & BUILDING MATERIALS





BLACK STEEL WIRE BURSH BLK



PAINT BRUSH



COTTON RAGS - COLORED & WHITE



MASKING TAPES



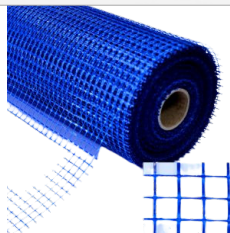
DRYWALL JOINT TAPE



TEFLON TAPE



TILE SPACER



BLUE FIBER MESH



LADDERS



BRICKLAYERS TROWEL



PLASTERING STEEL TROWEL



SHOVEL



GARDEN HEDGE SHEAR



PRUNNING SHEAR



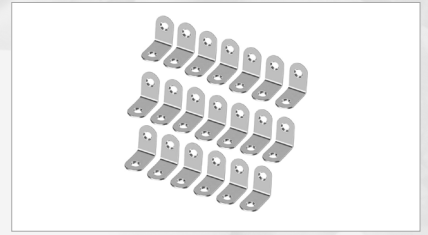
PAPER CUTTER SPARE
BLADE T TYPE



CONCRETE NAILS



COMMON WIRE NAILS



SHELF SUPPORTER



SHELF BRACKET GREY



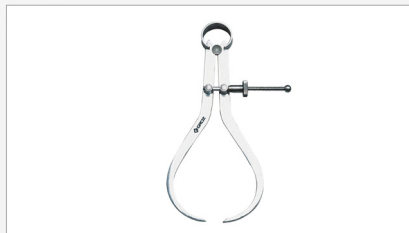
SOLDERING IRON



SILICONE SEALANTS



SILICONE GUN BLUE



SPRING CALLIPERS



PUNCH PLIER REVOLVING



SHEARING MACHINE WITH HANDLE



PACKING MACHINE



COMPELET TAP & DIE SET (WOODEN BOX)



TOOL BOX



HAND TROLLEY ONLY WHEEL



METAL JERRY CAN



Electrical energy and power is an integral component of life. There will be a continuing need for such products and services in our daily lives. **KOPERSCOT**. Aims to adopt the world renowned technologies that will increase our consumers quality of life, through the power and electrical distribution.

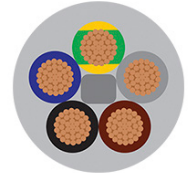
ELECTRICAL & LIGHTING



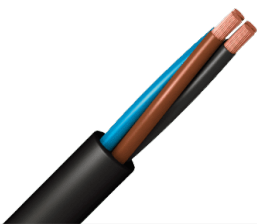
ARMOURD CABLE



BUILDING WIRE



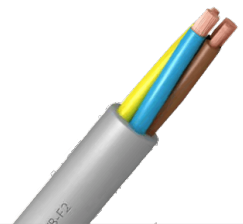
CONTROL CABLES



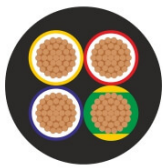
MARINE CABLES



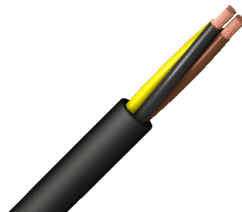
PANEL WIRE (LOW SMOKE ZERO HALOGEN)



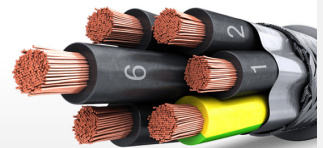
POWERFLEX CABLES



PVC MULTICORE FLEXIBLE CABLE



RUBBER CABLES



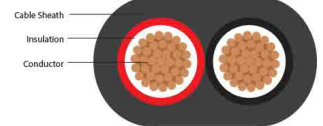
SCREENFLEX CABLES



SINGLE CORE SOLID WIRE



TELEPHONE CABLE



TWIN CORE FLAT CABLE



CABLE GLAND



CABLE TIES



FLOOR BOX

CABLES & WIRES | CABLE MANAGEMENT SYSTEM | WIRING DEVICE & ACCESSORIES
SWITCH GEARS | LIGHTING



ELECTRICAL & LIGHTING



GI CONDUITS



TIE BASE



BATTEN FITTINGS



BULB



BULKHEAD LIGHTS



CANDLE LAMPS



DOWN LIGHTS



EMERGENCY & EXIT LIGHTS



ENERGY SAVERS



FLOOD LIGHT



HD LAMPS



HIGHBAY LIGHTS



MIRROR LIGHTS



PANEL LIGHTS



SOLAR LIGHTS

CABLES & WIRES | CABLE MANAGEMENT SYSTEM | WIRING DEVICE & ACCESSORIES
SWITCH GEARS | LIGHTING





SPIKE LIGHT



SPOT LAMPS



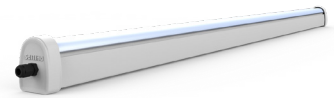
STARTERS



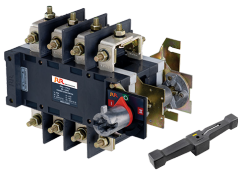
STREET LIGHT



TUBES



WEATHERPROOF BATTEN



CHANGE OVER SWITCHES



DISTRIBUTION BOARDS



EARTH LEAKAGE CIRCUIT
BREAKER (ELCB)



METAL ENCLOSERS



MINIATURE CIRCUIT BREAKERS
(MCB)



MOTOR CONTROL CENTERS
(MCC)



RAIL MOUNTED ISOLATORS



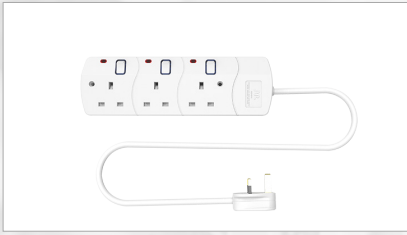
CEILING ROSE



DOOR BELL

**CABLES & WIRES | CABLE MANAGEMENT SYSTEM | WIRING DEVICE & ACCESSORIES
SWITCH GEARS | LIGHTING**

ELECTRICAL & LIGHTING



EXTENSION SOCKETS & REELS



FLOAT SWITCH



ISOLATORS



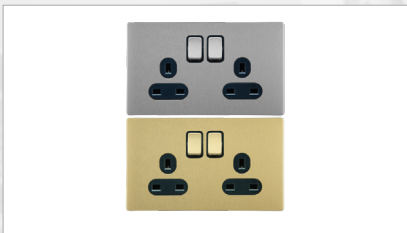
METALCLAD SWITCHES



METALLIC SWITCHES



MULTI ADAPTOR



PVC SWITCHES & SOCKETS



WEATHERPROOF SWITCHES



AXIAL BLOWER FANS



CABLE TRAYS & TRUNKING



EXHAUST FANS



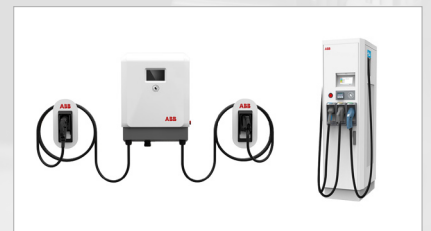
MOTOR STARTER



PRESSURE KIT



WATER PUMPS



EV CHARGING UNIT

CABLES & WIRES | CABLE MANAGEMENT SYSTEM | WIRING DEVICE & ACCESSORIES
SWITCH GEARS | LIGHTING





GET
IN **TOUCH**

+971 50 27 47 866



www.koperscot.com



sales@koperscot.com



Al Sabha Commercial Building - F 69.
Jebel Ali Ind Area - 1
P.O.Box : 57770
Dubai - United Arab Emirates

